

US Army Corps of Engineers
 San Francisco District
 1455 Market Street
 San Francisco, CA 94103

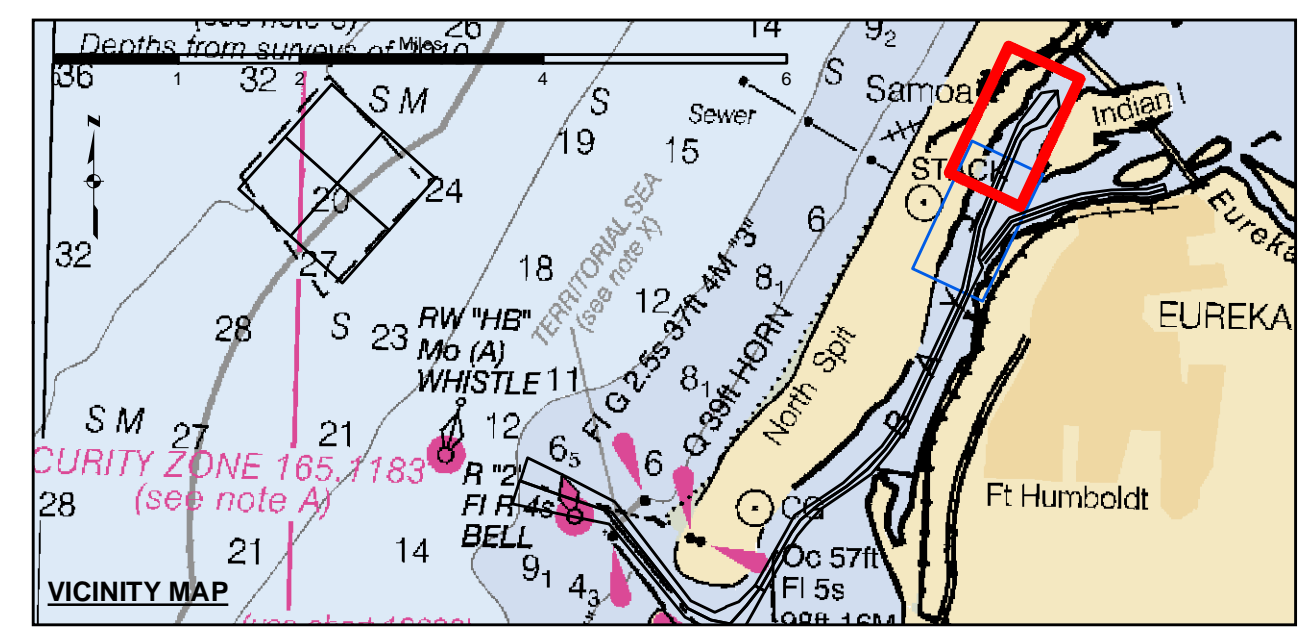
DISCLAIMER
 The United States Government furnishes this information as a public service. It is not intended to be used for any purpose other than that for which it was prepared. The United States Government makes no warranty, expressed or implied, concerning the accuracy, completeness, or reliability of the information. The user is responsible for the results of any application of the information. The United States Government shall not be held liable for any damages, including consequential damages, arising from the use of this information. These data belong to the Government. Therefore, the recipient may not transfer these data to others without also transferring this disclaimer.

Prepared Under the Direction of	Chart Date:	May 26, 2020
LT COLONEL C.E. CUNNINGHAM	Surveyed By:	PDT
Subject: Hydro Survey Team Leader	Plotted By:	PDT
Recommended: Chief, Hydro Survey Section	Checked By:	PDT
Approved: Chief, Construction Branch	Drawn by:	PDT

CALIFORNIA
 HUMBOLDT COUNTY
 HUMBOLDT BAY
 SAMOA CHANNEL
 POST-DREDGE SURVEY
 19-20 MAY 2020

Sheet Reference Number 1 of 2

Angle Point	Easting	Northing
18	5956047.79	2183225.93
19	5957636.19	2187056.43
20	5957063.58	218747.53
21	5958881.79	2188978.43
22	5959681.79	2188378.43
23	5959081.79	2187578.43
24	5958421.69	2187381.23
25	5958007.99	2186903.83
26	5958425.99	2183093.63
C18	5958236.79	2183159.43
C19	5957823.09	2186979.43
C20	5958152.59	2187513.43
C21	5958681.79	2187878.43
C23	5959581.79	2189078.43

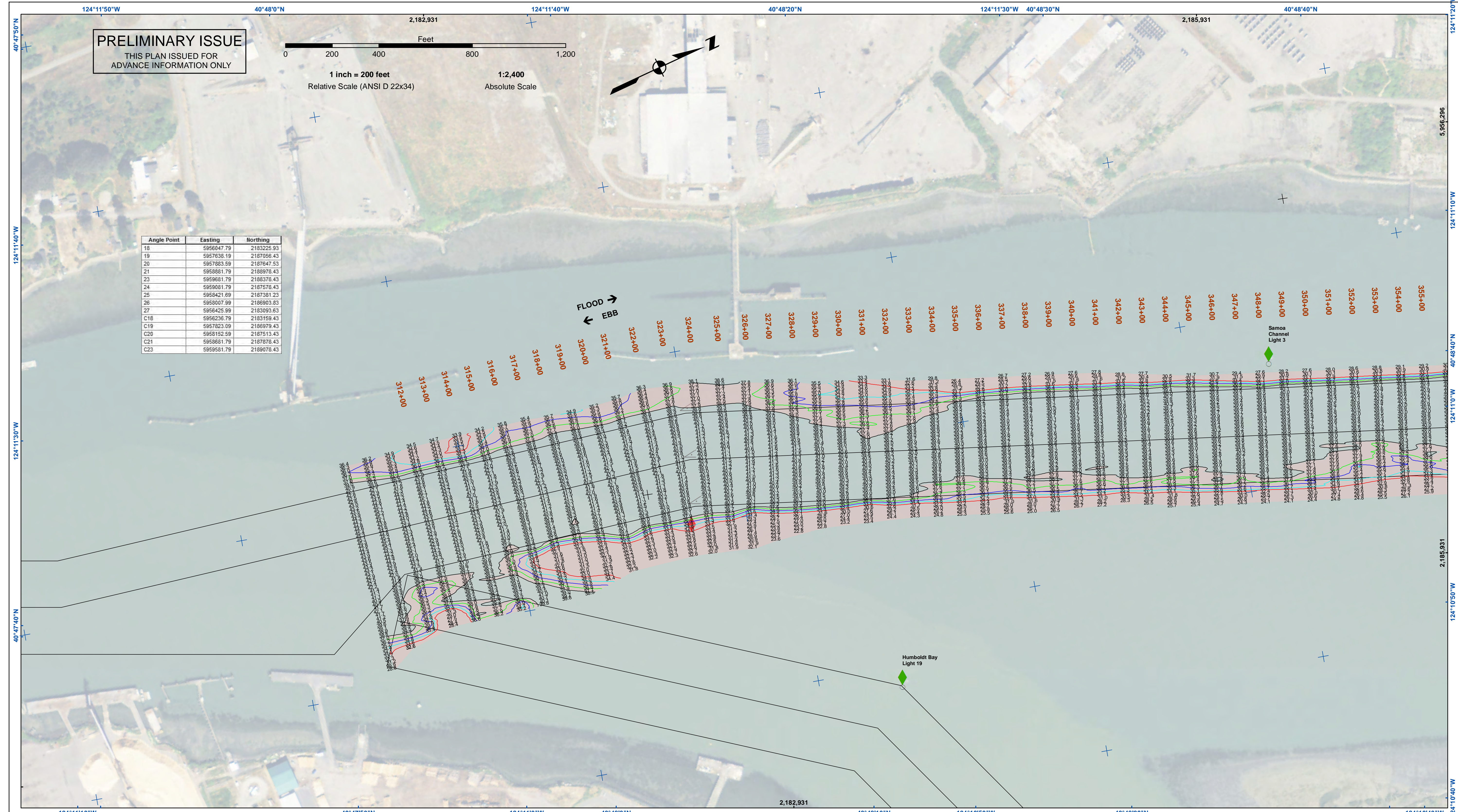


Federal Navigation Channel	Beacon, General	Contours
Shoaling Area	Obstruction Point	-38
Placement Area	Navigation Buoy	-37
Anchorage Area	Navigation Buoy	-36
Wreck Area	Shoalest Sounding*	-35
Submerged Wreck		-34
Angle Point		

NOTES:
 DRAWINGS NOT TO BE USED AS NAVIGATION. ONLY CHANNEL CONDITION AT DATE OF SURVEY. THE LOCATION OF ALL NAVIGATION AIDS ARE BASED ON INFORMATION PROVIDED BY THE U.S. COAST GUARD. BUOY LOCATION REPRESENT THE POSITION OF THE SINKER ONLY.
 SURVEYED BY THE CORPS OF ENGINEERS.
 SOUNDINGS WERE TAKEN BY FATHOMETER AND ARE SHOWN TO THE NEAREST TENTHS OF A FOOT.
 SOUNDINGS ARE BASED ON THE DATUM OF MEAN LOWER LOW WATER AT THE LOCALITY.
 PLANE GRID AND COORDINATES ARE BASED ON THE STATE OF CALIFORNIA COORDINATE SYSTEM, LAMBERT CONFORMAL PROJECTION, ZONE 1 NAD 83, CALIFORNIA, AS DESCRIBED IN SPECIAL PUBLICATION NO. 235, PUBLISHED BY THE NATIONAL OCEAN SURVEY.

PROJECT DEPTHS ARE AS FOLLOWS:
 BAR & ENTRANCE CHANNEL = 48 FEET
 NORTH BAY, SAMOA TO MILE 5.0 & = 38 FEET
 EUREKA CHANNEL, FIELDS LANDING CHANNEL & MILE 5.0 TO "N" STREET = 26 FEET

SOUNDINGS ARE BASED ON TIDE GAUGES REFERENCED TO U.S.C. & G.S. BENCH MARKS AS FOLLOWS:
 EUREKA & SOMOA CHANNELS - B.M. NO. 4 (1906) ELEV. 33.61' M.L.L.W.
 ENTRANCE & NORTH BAY CHANNELS - B.M. NO. 9 (1937) ELEV. 16.35' M.L.L.W.
 FIELDS LANDING CHANNEL - B.M. NO. 5 (1925) ELEV. 8.52' M.L.L.W.



US Army Corps of Engineers
 San Francisco District
 1455 Market Street
 San Francisco, CA 94103

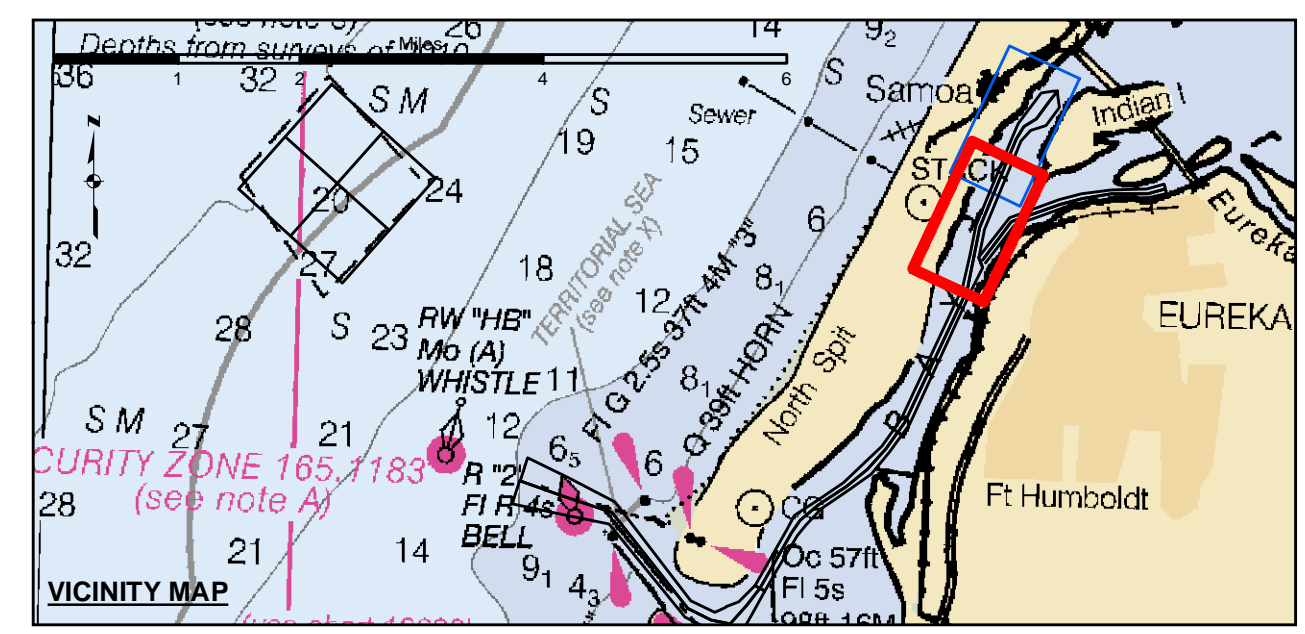
DISCLAIMER: The United States Government furnishes Access to this information for the purpose of providing information to the public. The United States Government makes no warranty, expressed or implied, concerning the accuracy, completeness, or reliability of the data furnished. The United States Government is not liable for any damages, including consequential damages, arising from the use of this information. These data belong to the Government. Therefore the recipient may not transfer these data to others without also transferring this Disclaimer.

Prepared Under the Direction of JOHN D. CUNNINGHAM LT COLONEL, C.E., DISTRICT ENGINEER	Chart Date: May 26, 2020
Subject: Hydro Survey Team Leader	Designed by: PDT
Recommended: Chief, Hydro Survey Section	Plotted by: PDT
Approved: Chief, Construction Branch	Checked by: PDT
	Drawn by: PDT

HUMBOLDT COUNTY CALIFORNIA
HUMBOLDT BAY
SAMOYA CHANNEL
POST-DREDGE SURVEY
 19-20 MAY 2020

Sheet Reference Number 2 of 2

Angle Point	Easting	Northing
18	5956047.79	2183225.93
19	5957636.19	2187056.43
20	5957683.59	2187647.53
21	5958681.79	2188978.43
22	5959681.79	2188378.43
23	5959081.79	2187578.43
24	5958421.69	2187381.23
25	5958007.99	2186903.83
26	5956425.99	2183093.63
27	5956236.79	2183159.43
C18	5957823.09	2186979.43
C19	5958152.59	2187513.43
C20	5958681.79	2187878.43
C21	5959581.79	2189078.43
C23		



Federal Navigation Channel	Beacon, General	Contours
Shoaling Area	Obstruction Point	
Placement Area	Navigation Buoy	-38
Anchorage Area	Navigation Buoy	-37
Wreck Area	Shoalest Sounding*	-36
Submerged Wreck		-35
Angle Point		-34

NOTES:
 DRAWINGS NOT TO BE USED AS NAVIGATION. ONLY CHANNEL CONDITION AT DATE OF SURVEY. THE LOCATION OF ALL NAVIGATION AIDS ARE BASED ON INFORMATION PROVIDED BY THE U.S. COAST GUARD. BUOY LOCATION REPRESENT THE POSITION OF THE SINKER ONLY.
 SURVEYED BY THE CORPS OF ENGINEERS.
 SOUNDINGS WERE TAKEN BY FATHOMETER AND ARE SHOWN TO THE NEAREST TENTHS OF A FOOT.
 SOUNDINGS ARE BASED ON THE DATUM OF MEAN LOWER LOW WATER AT THE LOCALITY.
 PLANE GRID AND COORDINATES ARE BASED ON THE STATE OF CALIFORNIA COORDINATE SYSTEM, LAMBERT CONFORMAL PROJECTION, ZONE I NAD 83, CALIFORNIA, AS DESCRIBED IN SPECIAL PUBLICATION NO. 235, PUBLISHED BY THE NATIONAL OCEAN SURVEY.

PROJECT DEPTHS ARE AS FOLLOWS:
 BAR & ENTRANCE CHANNEL = 48 FEET
 NORTH BAY, SAMOYA TO MILE 5.0 & = 38 FEET
 EUREKA CHANNEL, FIELDS LANDING CHANNEL & MILE 5.0 TO "N" STREET = 26 FEET
 SOUNDINGS ARE BASED ON TIDE GAUGES REFERENCED TO U.S.C. & G.S. BENCH MARKS AS FOLLOWS:
 EUREKA & SAMOYA CHANNELS - B.M. NO. 4 (1906) ELEV. 33.61' M.L.L.W.
 ENTRANCE & NORTH BAY CHANNELS - B.M. NO. 9 (1937) ELEV. 16.35' M.L.L.W.
 FIELDS LANDING CHANNEL - B.M. NO. 5 (1925) ELEV. 8.52' M.L.L.W.